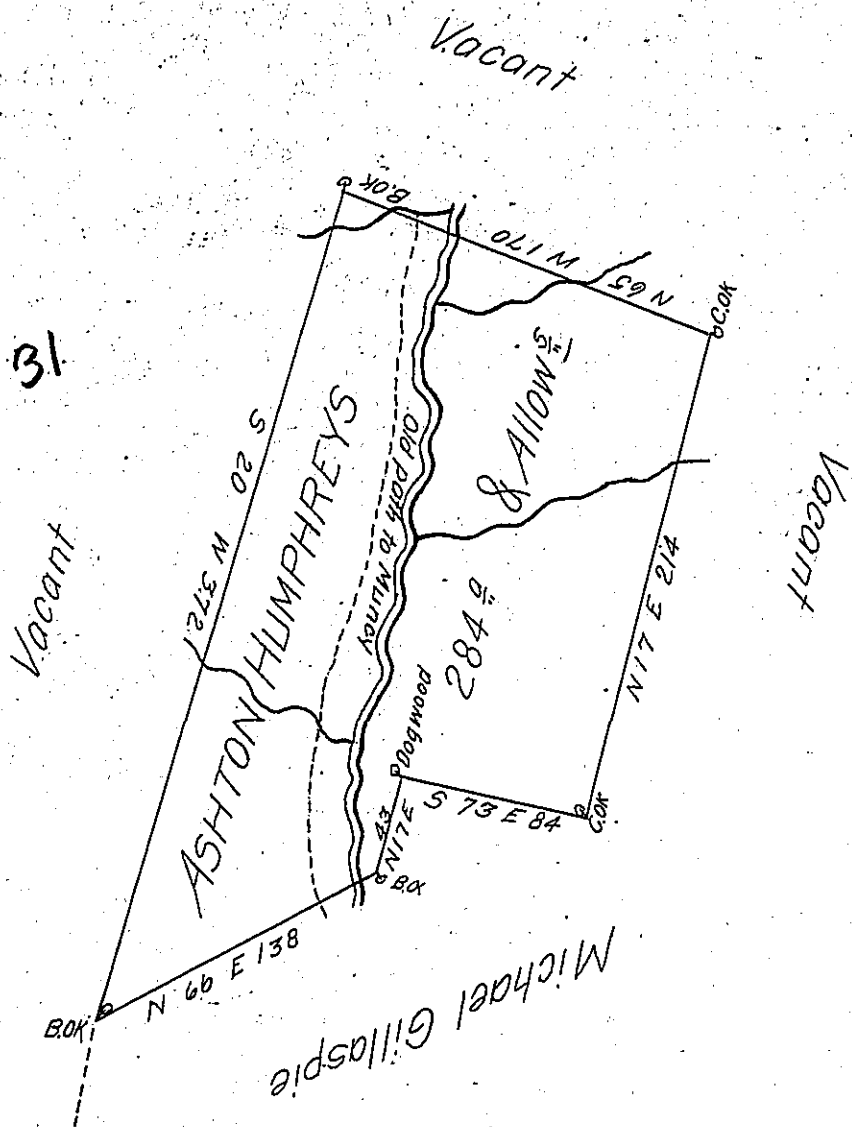


C 85-261

C-28 31



A Draught of a Tract of Land Situate on the Waters of Chillisquaque Creek Adjoining Land of Michael Gillaspie on the Old Path leading from Muncy to Mahoning in the County of Northumberland, Survey'd on the 20th day of December 1790 for Ashton Humphreys in Pursuance of his Warrant bearing Date the 29th day of November 1774 Containing Two Hundred & Eighty four Acres with the Allowance of Six P Cent for Roads &c

To Danl Brodhead Esq^r }
 Surveyor Genl }

J^r J Wallis D.S.

IN TESTIMONY that the above is a copy of the original remaining on file in the Department of Internal Affairs of Pennsylvania, made conformably to an Act of Assembly approved the 16th day of February, 1833, I have hereunto set my Hand and caused the Seal of said Department to be affixed at Harrisburg, this seventh day of February 1905

Joseph R. Brown
 Secretary of Internal Affairs